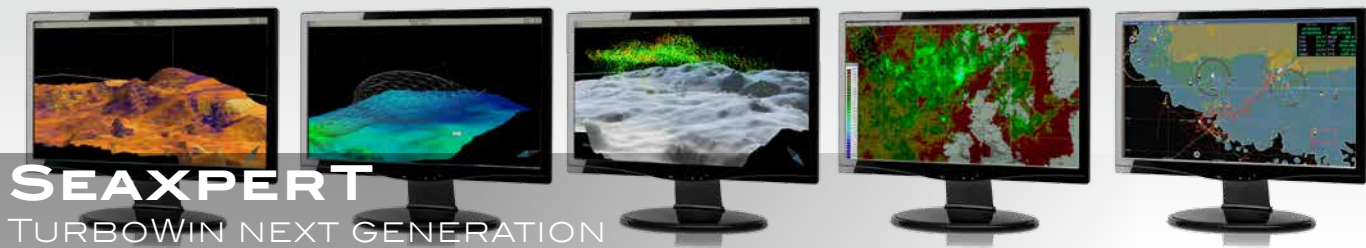


SEAXPERT

A SMARTER WAY TO FISH





SeaXpert is the fruit of more than 20 years' experience in navigation systems for professional fishing, with the outstanding success of TurboWin plotter. With the **SeaXpert** generation, you get the best out of merging data whilst enabling operations and analysis which has never existed before in the fishing industry.

SeaXpert has become the "New TurboWin" for innovative fishermen in the 21st century.

For the first time in the fishery market, a unique software product provides both fishing navigation features and fishing data concentration and processing. **SeaXpert** enhances skipper security and efficiency while providing the best fishing yield optimization tool, whilst compromising sustainable fishery harvesting and profitable practices.

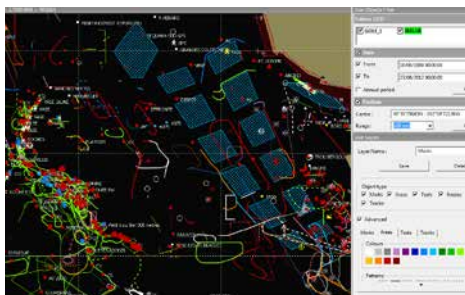
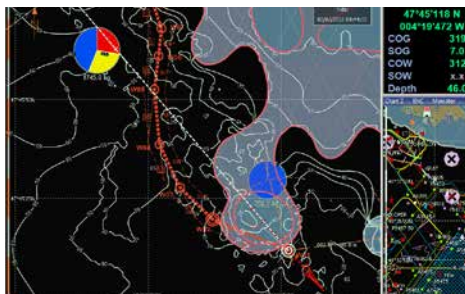
The skipper must handle a great deal of parameters ensuring safe navigation at the same time. For the best possible security, **iXBlue** has built up a new software platform, based on the latest GECDIS kernel. This heart can acquire the most relevant sensors and side systems available through dedicated interfacing/processing modules. It becomes the decision support/report systems allowing smart fishery strategy plans.

The skipper can make smarter and faster decisions, enhancing profitability, selectivity, and exploitation patterns of fisheries.





Based on ECDIS software, **SeaXpert** affords the best security and navigation guarantee and also has introduced the new ECS standard (Electronic Chart System) to the fishing industry. To achieve a high level of efficiency and reliability, **iXBlue** relied on technologies that are the hallmarks of TurboWin.



SAFE NAVIGATION

In addition to the most popular chart databases (CMAP, Max, NT), **SeaXpert** runs official ENC marine charts, offering exclusive interactive safety controls (antigrinding, danger checkout while editing routes...). Focussing on available vessel navigation information including radar data, **SeaXpert** presents essential security information on a daily basis comprising Overlay Radar, Anti-collision, ARPA, AIS and an interactive anti-grinding tool.

DATA FUSION

Because multi-sensor datasets do not correlate in space, **SeaXpert** software efficiently turns fishing data into geographic information layers that seamlessly integrate in **SeaXpert** geographic visualization, thanks to its integration with on-board data systems.

It correlates and stores every relevant data as multi Additional Fishing Layers.

SKIPPER DATABASE

Advanced fishing database management organizes data as layers, allowing smart storage organization and user manipulations, without any database size limitation. Organized into easy to manipulate arborescent folders, the skipper can merge, split and copy any partial or entire object database from his secondary plotter station (TurboWin, EasWin amongst others).

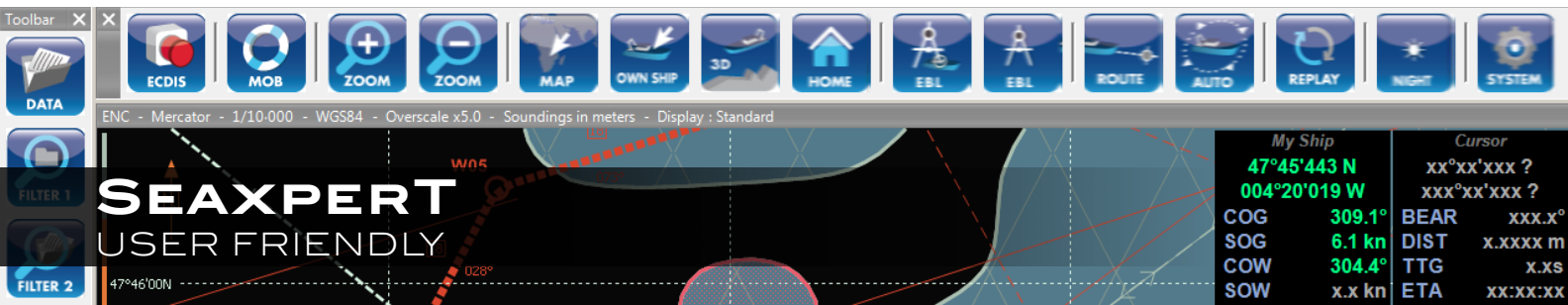
A multi-track recording facility provides an exclusive analytic replay mode.

DATABASE FILTERING

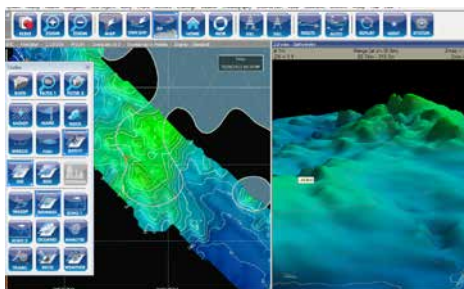
To enhance skipper efficiency in searching/targeting such crucial objects, **SeaXpert** proposes multi-level filter facilities. This eases dramatically his fishing strategy building capability, providing smart searching results.

DATABASE GATHERING

Compatible with the most popular fishing user data library from other systems existing on the market (Turbo Win, EasWin, others...), **SeaXpert** comes with a wide range of fishing database exchange facilities.



SeaXpert provides the operator with unparalleled functionality richness for commercial fishery vessels. **SeaXpert** remains easy to operate with a new advanced user interface to facilitate daily fishing data entries and editions.



MAN MACHINE INTERFACE

The **SeaXpert** environment proposes a dual toolbar concept, critical information panel and an object information/editing control panel enhancing the skipper's object handling.

Object readout and edition can be done overhead or through the docked object information panel. Factory default toolbar configuration is proposed, and can be customized by authorized users. A proposed icon library fulfils the crew's customization expectations. In order to facilitate operations in difficult conditions, enlarged icon bars can be activated as the information tips character size can be expanded.

ADAPTATIVE LAYOUT

SeaXpert comes with its default screen configuration according to the skipper's fishing method. In addition it screens layout set up, memorized as the skipper wishes, according to the requirements of the various fishing stages thus enhancing dramatically the ease of handling.

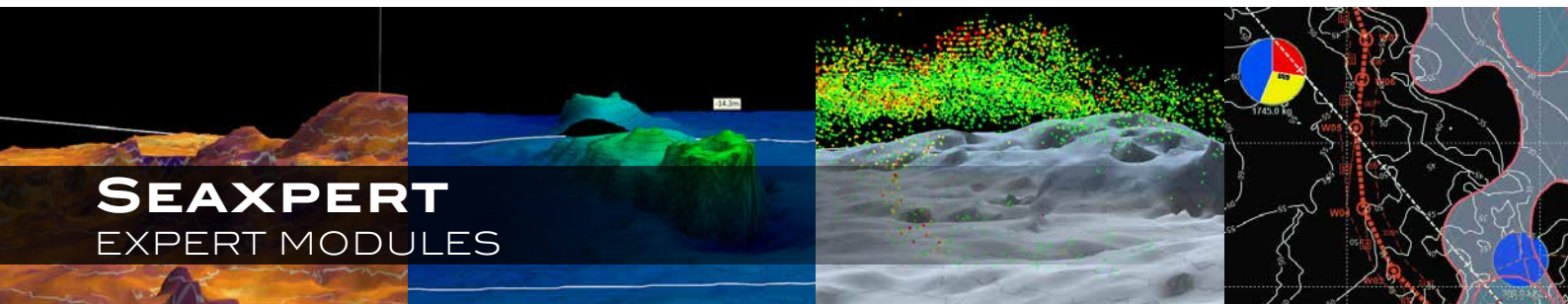
At any time, the skipper can leave the special layout configuration to the **iXBlue** default screen.

In order to secure operations, the skipper can reserve such functions to avoid incorrect input from other crew members.

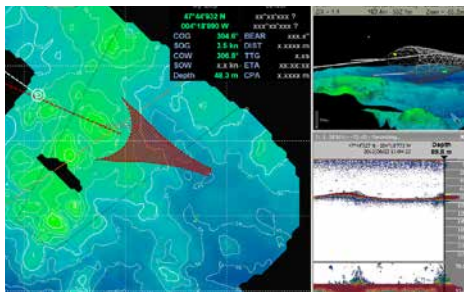
MULTI SCREEN LAYOUT

The screen layout principle enables **SeaXpert** software to be run on a single screen.

To make the most of its richness in functionality, it is strongly recommended to wire a minimum of two 19' displays.



Thanks to its modular concept, the skipper can add dedicated expert modules in order to merge more relevant fishing data. Each module gathers, processes and stores additional sensor data streams, related to the charting system.

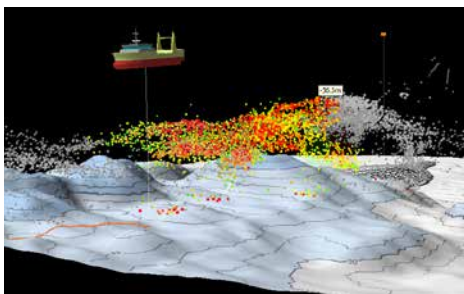


SOUNDER & BATHYMETRY

SeaXpert proposes new standards of dealing with acoustic data from single and multi-beam echo sounders. **SeaXpert** process bathymetry and the ocean floor. Every sounder ping is geolocated, providing exclusive fish spot analysis capabilities.

SEABED SEDIMENT

Dedicated sensors as well as the high end echosounders (Simrad ES series, Wassp or SeapiX) are processed to build up an accurate bottom hardness layer. Also, a commercial sediment database from hydrographic institutes can be shown.



BIOMASS

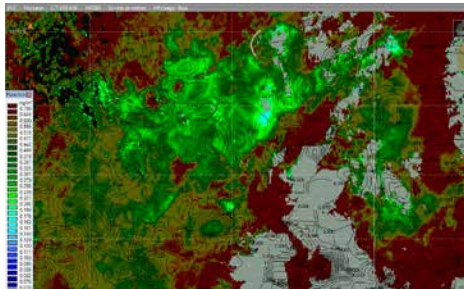
SeaXpert processes water column target strength signals (Wassp, SeapiX) and extracts fish targets to offer sharp accurate 2D and 3D shoal modelling shown over bathymetry and chart. Biomass abundance and the shoal body shape inform the skipper about the fish to be targeted.

TRAWL

The highest quality presentation of trawl behaviour enables the user to optimise the catch vessel's trajectory and placement, as close as possible to a rock whilst maintaining optimum security.

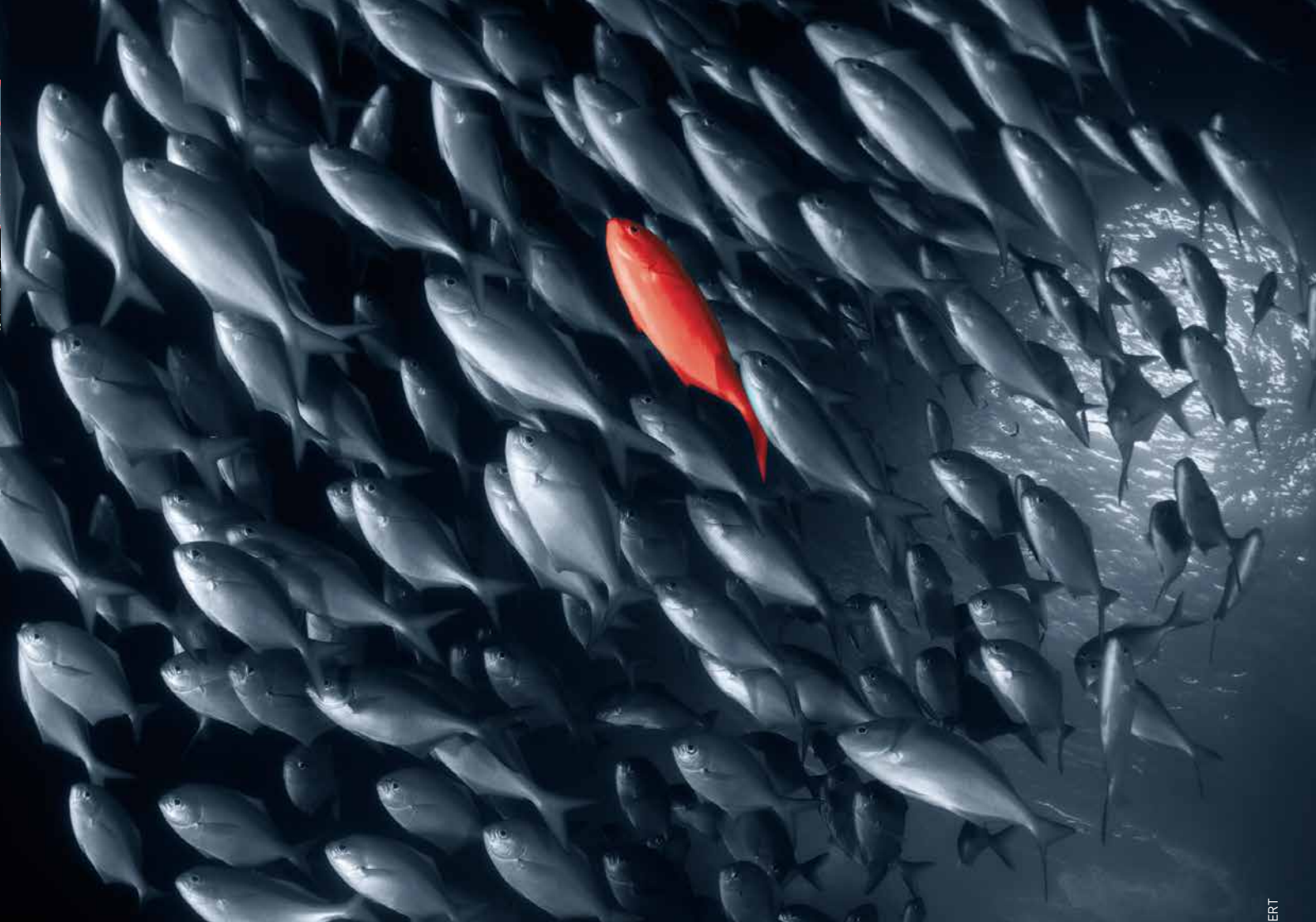
OCEANO

Being the very first fishing software on the market to include oceanographic parameters at the heart of the fishing database, **SeaXpert** shows ocean environmental status. Multi criteria filters process and define the most interesting fishing spots.



CATCH & RECOMMENDATION

SeaXpert enables the skipper to study daily production data from its connected catch Elog book. For fishing fleet management, the master can draw "Recommendation" layer, to be shared with others skippers.



EMEA +33 1 30 08 88 88 • AMERICAS : +1 781 937 8800 • APAC : +65 6747 4912

www.seaxpert.ixblue.com

