

# STANDARD HORIZON

NOTHING TAKES TO WATER LIKE STANDARD HORIZON

## 2012 MARINE COMMUNICATIONS PRODUCT CATALOG

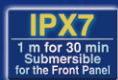
European Version





# FIXED MOUNT VHF RADIOS

## GX1100E ECLIPSE DSC+


**ITU CLASS D**

### 25 Watt VHF FM Marine Transceiver

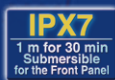
- Affordable Ultra Compact Class D Fixed Mount VHF Radio
- Submersible construction IPX7 ( Front Panel)
- Separate dedicated Channel 70 receiver
- Full dot matrix display with GPS Position and Time\*
- DSC Distress, Individual, Urgency, Safety, Position Report and Request Functions
- Programmable Scan, Priority Scan and Dual Watch
- NMEA input and output connections to a compatible GPS chart plotter
- Speaker microphone with Channel 16, Channel Selection and H/L Power keys
- ATIS may be programmed via the front panel
- All USA/International and Canadian Marine Channels

Case Size (W x H x D) : 155 x 60 x 170 mm  
Weight (Approx.) : 920 g (without bracket)

\*When attached to GPS Receiver



## GX1500E QUEST-X


**ITU CLASS D**

### 25 Watt VHF FM Marine Transceiver

- Independent Channel 70 Receiver Built-in for Continuous DSC Watch
- Flush Mount Capability
- Microphone with 16/9 Key and Channel Selection
- Display Shows Channel Names and Repeats the GPS Information\*
- Supports RAM+ Remote Control Microphone or VH-310 Telephone style handset both with intercom function
- Large Rotary Channel Selector
- DSC Distress, Individual, Urgency, Safety, Position Report and Request Functions
- NMEA Data Input/Output
- Lat/Long and SOG/COG Display
- Large Alphanumeric Display with GPS Position, Time SOG and COG (with GPS attached)
- One-Button Access to Channel 16 and 9
- Submersible Construction
- Versatile User-Programmable Scanning, Priority Scan and Dual Watch
- Backlit with Adjustable LCD Contrast

Case Size (W x H x D) : 180 x 80 x 145 mm  
Weight (Approx.) : 1 kg (without bracket)



\*When attached to GPS Receiver

NEW FOR 2012

## GX1600E EXPLORER


**ITU CLASS D**

### 25 Watt VHF FM Marine Transceiver

- Ultra thin and compact rear case design (3.5" depth)
- Meets ITU-R M493-12 Class D DSC (Digital Selective Calling) with Individual, All ship, Position Report, Request and Distress
- Navigation to a DSC Distress Call with compass page
- Automatically poll the GPS position of up to 4 ships using DSC
- Enter, Save, and Navigation to waypoint with Compass page
- GPS Compass display
- Navigation (LAT/LON, SOG, and COG) information shown on display
- Submersible IPX8 1.5 m (4.92 Ft) for 30 minutes
- Noise canceling microphone with channel UP/DOWN, 16/9 and H/L keys
- Programmable Scan, Priority Scan, and Dual Watch
- GPS repeating of position, SOG, COG and time
- Customizable channel names
- Oversized dot matrix display
- NMEA Input and Output
- Programmable soft keys
- Capable of connecting to a Second Station CMP30 Remote Access Microphone

Case size (W x H x D): 150 x 85 x 900 mm  
Weight (Approx.) : 0.9 kg (with out bracket)

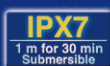




## GX2000E



MATRIX



ITU CLASS D

## 25 Watt VHF FM Marine Transceiver

- AIS (Automatic Identification System) receiver or transponder connection
- AIS target display: MMSI, Call Sign, Ship Name, BRG, DST, SOG and COG\*1,2
- Contact AIS Ship with DSC\*1,2
- CPA (Closest Point of Approach) Alarm\*1,2
- DSC Distress, Individual, Urgency, Safty, Position Report and Request Functions
- Independent Channel 70 receiver built-in for continuous DSC watch
- Local/Distance attenuator
- Enter, Save and Navigate to waypoints with Compass page\*2
- Navigate to a DSC Distress Call\*2
- Submersible IPX7 (1 m for 30 minutes)
- ClearVoice noise canceling speaker microphone with channel selection and 16/9 key
- Large rotary Channel knob with push to enter, backlit display and keys
- 30 Watt PA/Loud Hailer with pre-programmed fog signals
- Capable of connecting an optional RAM3 second station remote microphone with intercom function
- DSC position request and report functions when connected to compatible GPS chart plotter
- Voice Scrambler (optional)
- Versatile user-programmable scanning, priority scan and Dual Watch
- One-button access to Channel 16 and 9
- User programmable soft keys
- Navigation (LAT/LON, SOG and COG) information shown on display\*2
- E2O (Easy To Operate) menu system



Case Size (W x H x D) : 180 x 80 x 160 mm

Weight (Approx.) : 1.40 kg (without bracket)

\*1 when connected to an optional AIS receiver or transponder

\*2 when connected to an optional GPS



## GX2100E



MATRIX AIS



ITU CLASS D

## 25 Watt VHF FM Marine Transceiver

- Integrated dual channel AIS (Automatic Identification System) receiver
- AIS target display: MMSI, Call Sign, Ship Name, BRG, DST, SOG and COG\*
- Contact AIS Ship with DSC\*
- CPA (Closest Point of Approach) Alarm\*
- 38400 AIS VDM sentence output to compatible GPS Chart Plotter
- DSC Distress, Individual, Urgency, Safty, Position Report and Request Functions when connected to a compatible chart plotter
- Independent Channel 70 receiver built-in for continuous DSC watch
- Local/Distance attenuator
- Enter, Save and Navigate to waypoints with Compass page\*
- Navigate to a DSC Distress Call\*
- Submersible JIS-7 / IPX7 (1 m for 30 minutes)
- ClearVoice noise canceling speaker microphone with channel selection and 16/9 key
- Large rotary Channel knob with push to enter, backlit display and keys
- 30 Watt PA/Loud Hailer with pre-programmed fog signals
- Capable of connecting an optional RAM3 second station remote microphone with intercom function
- Voice Scrambler (optional)
- Versatile user-programmable scanning, priority scan and Dual Watch
- One-button access to Channel 16 and 9
- User programmable soft keys
- Navigation (LAT/LON, SOG and COG) information shown on display\*
- E2O (Easy To Operate) menu system



Case Size (W x H x D) : 180 x 80 x 160 mm

Weight (Approx.) : 1.45 kg (without bracket)

\*When connected to a GPS



## Options for VHF FM Marine Transceivers

Model Name	Remote Access Microphone				External Speaker		Hail / PA Speaker		Cover	Bracket	Encryption
	CMP30B Remote Access Microphone (Black)	CMP30W Remote Access Microphone (White)	VH-310 Remote Access Handset with Cradle	CT-100 7m Extension Cable	MLS-300 External Speaker	MLS-310 External Speaker with 10W amplifier	220SW 114 mm Round PA/hailing horn	240SW 127 x 203 mm Rectangular PA/hailing horn	Dust Cover	Flush mount bracket	CVS2500A 4 Code Voice Scrambler
GX1100E					●	●			HC1000	MMB-84	
GX1500E	●	●	●	●	●	●				MMB-84	
GX1600E	●	●		●	●	●			HC1600	MMB-97	
GX2000E	●	●		●	●	●	●	●	HC2000	MMB-84	●
GX2100E	●	●		●	●	●	●	●	HC2000	MMB-84	●



# FLOATING HANDHELD VHF RADIOS

LEADING THE INDUSTRY WITH THE FIRST FLOATING VHF WITH GPS



NEW FOR 2012

## HX290E



**IPX8**  
1.5 m for 30 min  
Submersible

### FLOATING 5 WATT HANDHELD VHF

- Floating – submersible to IPX8 1.5 m for 30 minutes
- All International, USA and Canada Channels
- Inland Waterways ATIS mode supported
- Slim form fitting case design with Glow-In-The-Dark strip
- 1W Low Power TX output for extended operating time
- Programmable User Scan, Priority and Dual Watch
- Optional Speaker Microphone or Headset operation
- Key lock to prevent accidental PTT operation
- Low Battery indicator
- Preset key for quick access for up to 10 channels
- Optional FBA-42 Alkaline Battery tray available.

Case size (W × H × D) : 57 × 133 × 44 mm  
Weight (Approx.) : 310 g with FNB-V110LI



## HX851E



**IPX7**  
1 m for 30 min  
Submersible

### FLOATING MARINE VHF TRANSCEIVER

- Built-in 12 Channel GPS receiver
- 6 Watt Transmit Power
- DSC with Distress, Individual Call, All Ships Call, Group Call, Position Request and Send
- Lat/Lon, COG and SOG position information shown on the display
- Channel names shown on the display
- Volume and Squelch indication on the Display
- SOS Strobe light
- 1150 mAh Rechargeable Li-Ion battery
- AC Charger with cradle included
- Selectable power output 6/5/2.5/1 watt

Case size (W × H × D) : 62.5 × 141.5 × 45 mm  
Weight (Approx.) : 335 g with FNB-VL99LI



## HX751E



**IPX7**  
1 m for 30 min  
Submersible

### FLOATING MARINE VHF TRANSCEIVER

- 6 Watt Transmit Power
- Ergonomic Design
- Volume & Squelch indication on Display
- SOS Strobe light
- Submersible Speaker Microphone Jack
- Preset key (Maximum 10 channels)
- 700 mW Loud internal speaker audio
- Built-in thermometer sensor
- 1150 mAh Rechargeable Li-Ion battery
- AC Charger with cradle included

Case size (W × H × D) : 62 × 141.5 × 41 mm  
Weight (Approx.) : 305 g with FNB-VL99LI



## HX760E



**IPX7**  
1 m for 30 min  
Submersible

### HANDS FREE FLOATING MARINE VHF TRANSCEIVER

- Hands-free operation with VOX function
- 6 Watt transmit Power
- Ergonomical Shape
- Volume and Squelch indicator on Display
- SOS Strobe light
- Submersible Speaker Microphone Jack
- Preset Key (Maximum 10 Channels)
- 700 mW Loud internal speaker audio
- Built-in thermometer sensor
- 1150 mAh Rechargeable Li-Ion battery
- AC Charger with cradle included

Case size (W × H × D) : 62 × 141.5 × 41 mm  
Weight (Approx.) : 310 g with FNB-VL99LI, Belt Clip, Antenna



#### Bluetooth® option for HX760E

**BH-2A**  
Bluetooth® wireless headset



**CD-40**  
Charger cradle used with PA-46B/C\*



**PA-46C/U\***  
AC adaptor for CD-40





## HANDHELD VHF RADIOS

DESIGNED SPECIFICALLY FOR USE IN HARSH MARINE ENVIRONMENTS

**HX280E** CE**IPX7**  
1 m for 30 min  
Submersible**BEST OF THE BASICS**

- Submersible IPX7 (1 m for 30 minutes)
- Slim, form fitting case design
- More than 13 hours of battery life
- Selectable 5 and 1 Watt transmit power output
- Supplied with a 1650 mAh Lithium-ion battery, AC and DC chargers and a charging cradle
- Huge channel display
- All USA, International and Canadian Marine Channels
- Programmable Scan, Priority Scan and Dual Watch
- Key lock
- Squelch level on display
- Low battery indicator
- Preset key used to recall up to 10 favorite channels
- Optional FBA-40 Alkaline Battery tray available

Case size (W x H x D) : 56 x 133 x 27.5 mm

Weight (Approx.) : 310 g with FNB-V105LI



NEW FOR 2012

**HX400E** CE**IPX8**  
1.5 m for 30 min  
Submersible**SUBMERSIBLE 5 WATT HANDHELD COMMERCIAL VHF WITH LMR CHANNELS**

- Submersible IPX8 / 1.5 m (4.92 Ft) for 30 minutes
- Selectable 5 or 1 Watt transmit power output
- Built-in Separate Noise Cancelling Microphone
- 40 Programmable Land Mobile Channels 134 MHz to 174 MHz with CTCSS and DCS signaling
- Programmable channel names
- Low battery indicator
- Built-in Voice Scrambler for private communications
- All USA, International and Canadian Marine Channels
- Optional speaker microphones and headsets available
- AC and DC chargers
- Programmable Scan, Priority Scan and Dual Watch
- Preset key used to recall up to 10 favorite channels
- Key lock

Case size (W x H x D) : 55 x 133 x 47 mm

Weight (Approx.) : 380 g with FNB-V115LI

**HX370E** CE**IPX7**  
1 m for 30 min  
Submersible**COMMERCIAL WORKHORSE**

- Submersible IPX7 1 m for 30 minutes
- 40 Programmable LMR Channels (134-174 MHz) with CTCSS/DCS signalling.
- Selectable 1W / 5W Transmit Power output
- All International, USA and Canada Channels
- External Speaker Microphone socket
- Supplied with 1400 mAh Ni-MH Battery, Alkaline Battery case and AC/DC Charger and cradle
- SOS Strobe light
- Heavy Duty die-cast frame
- Voice Scrambler Option available
- Programmable Scan, Priority Scan, Dual Watch and Triple Watch

Case size (W x H x D) : 58 x 120 x 30.5 mm

Weight (Approx.) : 380 g with FNB-83



Model Name	Antenna		Battery		Battery Charger		Speaker Microphone / Vox Headset / Earpiece Microphone				DC cable		Belt Clip
	CAT460	CN-3 BNC-SMA Adaptor	Rechargeable	Alkaline Battery tray	Cradle	AC Adaptor	HM-73A4B Submersible	MH-57A4B Mini speaker Microphone	VC-24 Vox Head set	VC-27 EarPiece/Mic	E-DC-6 DC cable	E-DC-19A DC cable with 12V cigarette Lighter plug	
HX851E													CLIP-19 (Included)
HX751E													CLIP-19 (Included)
HX760E													CLIP-19 (Included)
HX290E													CLIP-22 (Included)
HX280E													CLIP-920 (Included)
HX400E													CLIP-22 (Included)
HX370E													CLIP-14 Quick draw (Included)

\*C for 230 VAC / U for 230VAC UK Plug

STANDARD HORIZON



## GPS CHARTPLOTTERS



CP180/CP180i



CP300/CP300i



CP500



- 5 inch color QVGA (320 x 240) sunlight viewable display (CP180 / i)
- 7 inch color WVGA (800 x 480) sunlight viewable display (CP300 / i)
- 12 inch color full VGA (800 x 600) sunlight viewable display (CP500)
- Internal 50 channel WAAS GPS receiver and antenna (CP180i / CP300i)
- External 50 channel WAAS GPS receiver and antenna (CP180 / CP300 / CP500)
- GPS WAAS Smart Antenna, bracket and flush mounting hardware (CP180 / CP300 / CP500 External Aerial version only)
- Capable of using the Optional FF520 50/200kHz BLACK BOX FISH FINDER
- C-MAP NT+/MAX cartography compatible
- Improved Worldwide background showing detail up to 2.0 NM
- CP180/CP180i: 600 Waypoints (Marks) / 20 Routes storage
- Stores up to 3000 Marks and 50 Routes
- NMEA Data pages for CP180/CP180i: 3 NMEA Outputs and 2 Inputs
- Video input for Camera or DVD player (CP300 / i, CP500)
- 1 VGA video output, connects to compatible TV or monitor (CP500)
- Customizable Picture In Picture video window (CP500)



CP180i/CP300i Internal GPS antenna

## GPS CHARTPLOTTER / FISHFINDER COMBOS



CPF180i



CPF300i



## Fish Finder Features

- Built-in 600 W Dual frequency Fish finder
- 50 and 200 kHz dual frequency selection
- 2x and 4x Zoom
- Bottom Lock and White Line selections
- Sensitivity Time Control (STC) and Surface Noise Filter
- Speed Sensor (if available on transducer)
- Alarms - Shallow, Depth, Temp Upper and Lower

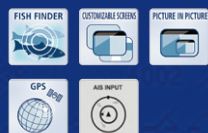
- CPF180i: 5 inch 320x240 resolution display
- CPF300i: 7 inch 800x480 high resolution wide screen display
- Internal 50 channel WAAS GPS receiver and antenna
- External 50 Channel WAAS GPS Smart antenna option
- Video input with Picture In Picture display (CPF300i 1 input)
- C-MAP NT+ and C-MAP MAX cartography options
- Programmable soft keys (CPF300i)
- AIS, Fish Finder capable
- Displays DSC Distress and Position report calls received from a DSC VHF radio
- Dual chart window with independent zoom levels
- Compass display around vessel icon and AIS target colors on chart page
- Route checking and Guardian Alarm
- Supplied with a swivel bracket and flush mounting hardware

C-Map Max  
Optional Cartography

Bring your electronic charts to life with the ultimate navigator. You'll benefit from the most accurate chart detail, versatile features and a wealth of useful data.



## TOUCH SCREEN MULTIMEDIA CHARTPLOTTERS



CPN700i

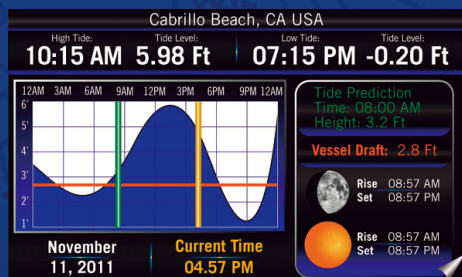


CPN1010i

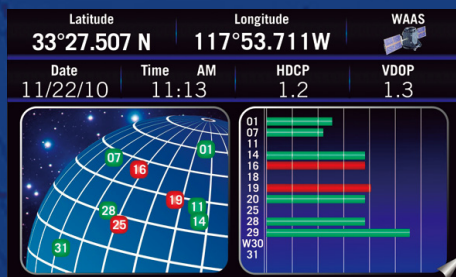
- CPN700i: 7" WVGA 800 x 480 high resolution wide screen touch screen display
- CPN1010i: 10.2" WSVGA 1024 x 600 high resolution wide screen touch screen display
- Built-in stereo speakers with auxiliary output to connect your onboard stereo
- Bluetooth capability to use option keyboard and mouse
- Multimedia Internet Explorer 6.0 and Windows Media Player built-in
- USB connection for memory stick to watch movies, view pictures, or listen to music
- Optional C-Map 4D cartography for viewing 3D, raster or vector charts
- Share optional C-Map 4D cartography between 2 plotters
- Internal 50 channel WAAS GPS antenna with external antenna connection
- Dual chart window with independent zoom levels
- Displays DSC Distress and Position report calls received from a DSC VHF radio
- AIS, Fish Finder capable
- CPN700i (1) CPN1010i (2) Video inputs with Picture in Picture display
- CPN1010i (1) VGA Video output
- Dual chart window with independent zoom levels
- Compass display around vessel icon and AIS target colors on chart page
- Route checking and Guardian Alarm
- Supplied with swivel mounting bracket and flush mounting hardware

**Internet & Multimedia at your finger tips**

Built-in Wi-Fi allows internet access from any hotspot. Check your email and reply with the touch screen keyboard or connect a Bluetooth® mouse and keyboard. Stream music or video and listen effortlessly from built-in speakers, or connect to an optional amp with the dedicated low level audio outputs. Connect a memory stick in the front or rear panel USB connector and watch movies, view pictures, or listen to music on a USB memory stick.



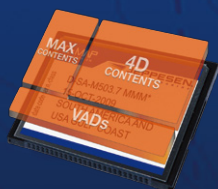
Tide page



GPS Status page



Highway page

**C-Map 4D**

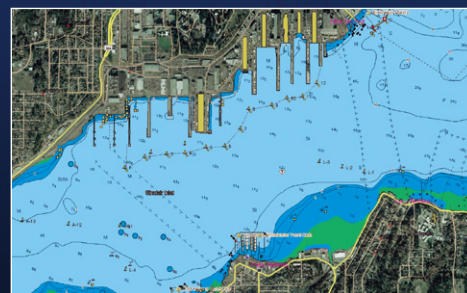
The only navigation solution that is actually two chart products on one cartridge. Choose the Max or Full 4D content, and then you can unlock data or add new chart data as it becomes available.



3D Views



2D/3D Raster Overlays



2D/3D Satellite Overlay





## Location and Connection



## Options for Chartplotter



### FF525 Black box fishfinder

- 50/200 kHz Dual frequency
- 600 W or 1000 W output

Power supply	: 10 - 35 VDC
Max stand by current draw	: 1000 W:142 mA at 12 VDC
	: 600 W:100 mA at 12 VDC
Max current draw 1000W	: 1.42A at 12 Volt DC
	: 600 W:1A at 12 Volt DC
Power Output	: 600/1000 W (4800/8000 WPeak to Peak)
Display Colors	: 16 colors
Display/Vertical Resolution	: 400 pixels on CP390i, CP590, CPV350, CPV550, CPN700i and CPN1010i
	: 200 pixels on CP190i
Frequency	: Dual 50 and 200 kHz
Max Depth*	: 1000 W:1200 Ft (365 m) at 200 kHz; 4000 Ft (1219 m) at 50 kHz
	: 600 W:700 Ft (213 m) at 200 kHz; 1500 Ft (457 m) at 50 kHz

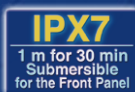
Min Depth	: 2.5 Ft (0.8 m) at 200 kHz; 5 Ft (1.6 m) at 50 kHz
Max Typical*	: 1000 W:980 Ft (299 m) at 200 kHz; 2700 Ft (823 m) at 50 kHz
	: 600 W:600 Ft (183 m) at 200 kHz; 1350 Ft (411 m) at 50 kHz
NMEA output sentences	: Depth: DBT, DPT
	: Temperature: MTW
	: Speed (with DTS521 or DST526): VHW
Weight	: 2.20 LBS (1 kg)
Operating temperature range	: 32° F to 122° F (0° C to +50° C)
Storage temperature range	: -4° F to 158° F (-20° C to +70° C)
Dimensions	: 7.73"W x 1.96"H x 6.5"D (196.4W x 50H x 164.96D mm)

**NOTE\*** This is not a guaranteed specification. The actual maximum depth capability of the system depends on the type of transducer fitted, the reflectivity of the bottom, water condition, etc.

	Fish Finder Module	Transducer							Video Cable	
Model Name	FF525	DST520 600W 2" Nylon Thru-Hull Depth/Temp	DST521 600W Transom Mount Depth/Speed/Temp	DST523 600W 2" Bronze Thru Hull Depth/Temp	DST525 600W In-Hull Depth Transducer	DST526 600W Bronze Thru Hull Depth/Speed/Temp with fairing block	DST527 1000W In-Hull Depth Transducer	DST528A 1000W Thru-Hull Depth/Temp with fairing block	ACVC10	VGAC10
CP180/300/500	●	*	*	*	*	*	*	*	● (CP300/CP500)	● (CP500)
CP180i/300i	●	*	*	*	*	*	*	*	● (CP300/CP500)	
CPF180/300		●	●	●	●	●			● (CPF300)	
CPN700i / 1010i	●	*	*	*	*	*	*	*	●	

\* Can be used when FF525 is connected

# VLH-3000



## 30 Watt Loud Hailer

- 6 Fog Horn signals, Underway, Stop, Sail, Tow, Aground and Anchor
- Flush Mount Capability
- Two 30 Watt PA Outputs, One Forward One Aft
- Two Intercom Connections Allow You to Toggle Between IC1 and IC2
- Microphone Features Dedicated Button for Access to Intercom Stations
- External Speaker Output: 4 W Max at 4 ohm
- Case Size (W x H x D) : 180 x 110 x 140 mm
- Weight (Approx.) : 1.35 kg (without bracket)

## Options

External Speaker			Hail / PA Horn	
<b>MLS-300</b> External Speaker	<b>MLS-300i</b> Loud Hailer Intercom Speaker (with CALL button)	<b>MLS-310</b> 10 W Amplifier External Audio Speaker	<b>220SW</b> 114 mm Round 4 orm Hail/PA Horn	<b>240SW</b> 127 x 203 mm Rectangular 4 orm Hail/PA Horn



STANDARD HORIZON reserves the right to make changes and enhancements to products at our discretion. Current specifications are therefore subject to change without notice.

# STANDARD HORIZON

- ☐ **YAESU MUSEN CO., LTD.**  
Tennozu Parkside Building  
2-5-8 Higashi-Shinagawa, Shinagawa-ku, Tokyo 140-0002 Japan
- ☐ **YAESU USA, INC.**  
**US Headquarters** 6125 Phyllis Drive, Cypress, CA 90630, U.S.A.
- ☐ **YAESU UK LTD.**  
Unit 12, Sun Valley Business Park, Winnall Close  
Winchester, Hampshire, SO23 0LB, U.K.
- ☐ **YAESU HK LTD.**  
Unit 1306-1308, 13F., Millennium City 2, 378 Kwun Tong Road,  
Kwun Tong, Kowloon, Hong Kong

